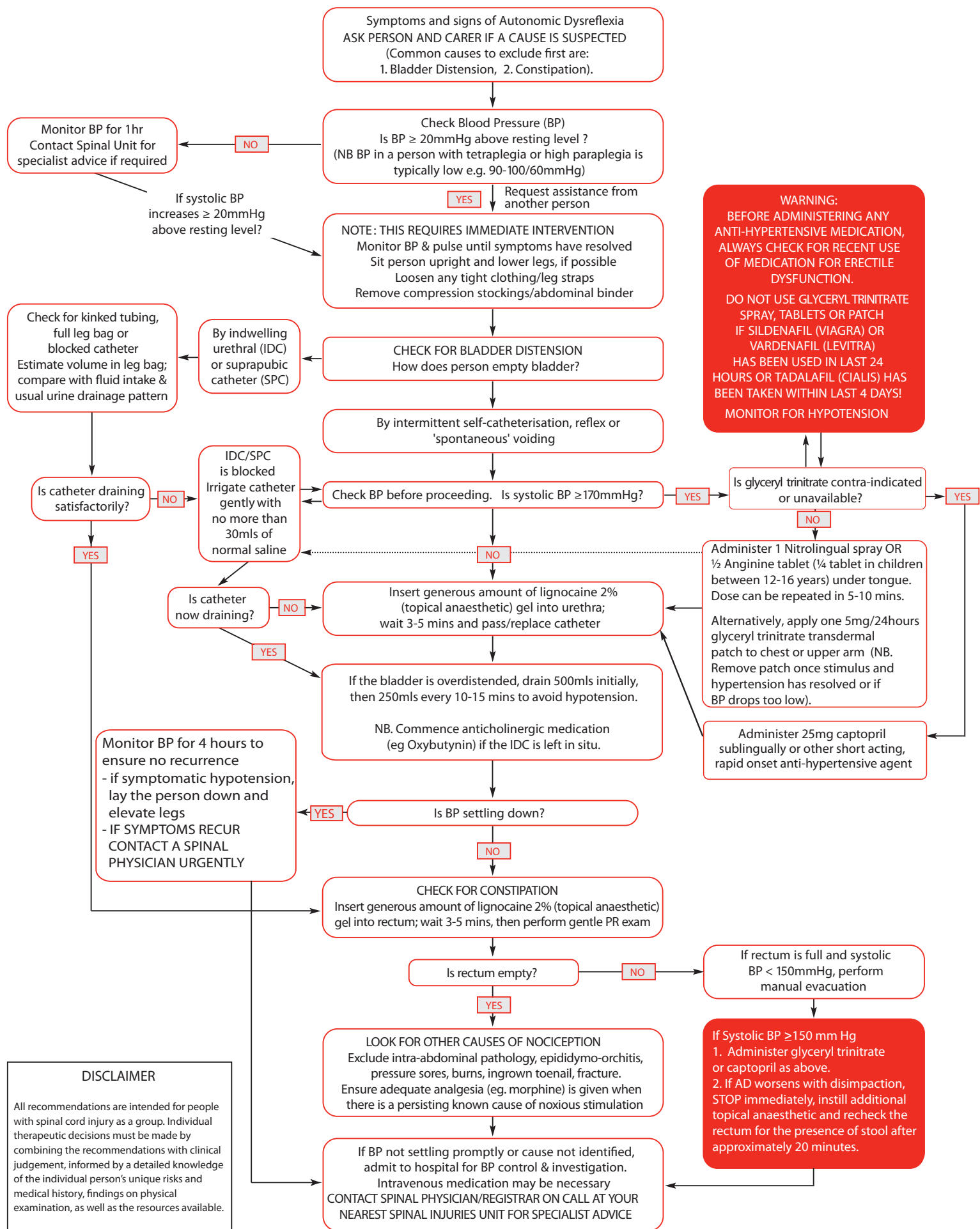


Treatment Algorithm for Autonomic Dysreflexia (Hypertensive Crisis) In Spinal Cord Injury



DISCLAIMER

All recommendations are intended for people with spinal cord injury as a group. Individual therapeutic decisions must be made by combining the recommendations with clinical judgement, informed by a detailed knowledge of the individual person's unique risks and medical history, findings on physical examination, as well as the resources available.

This revised algorithm was re-endorsed for use by the Australian and New Zealand Spinal Cord Society (ANZSCOS) in September 2010.

This project was funded by the Motor Accidents Authority of NSW.