

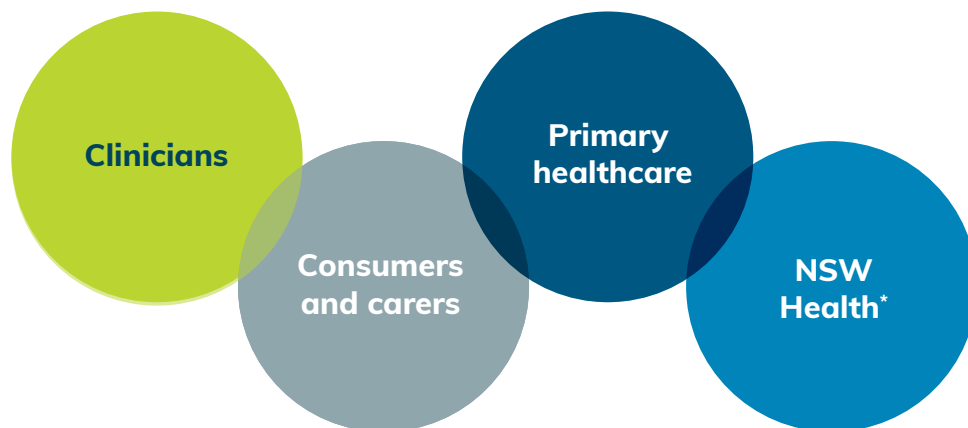
Chronic wound management initiative

OCTOBER 2022

Drivers for change

- The significant challenges experienced by people living with a chronic wound, and their loved ones.
- Inefficiencies and high costs of chronic wound management – for those living with a chronic wound and the health system.
- Inconsistent use of evidence-based practice for chronic wound management, leading to unwarranted clinical variation.

A collaboration between:



* NSW Health is comprised of the ACI and pillars, Ministry of Health and LHDs/SHNs.

Building health system capacity for chronic wound management

Leading Better Value Care

(LBVC) initiatives identify and scale evidence-based strategies to create sustainable change across the health system, and improve healthcare experiences and outcomes for consumers.

The **LBVC Chronic Wound Management Initiative** is creating system change and enhancing capacity to deliver evidence-based chronic wound management services. It is focusing on the building blocks needed to strengthen the health system.

The diagram highlights the breadth of strategies the initiative is delivering across the system.

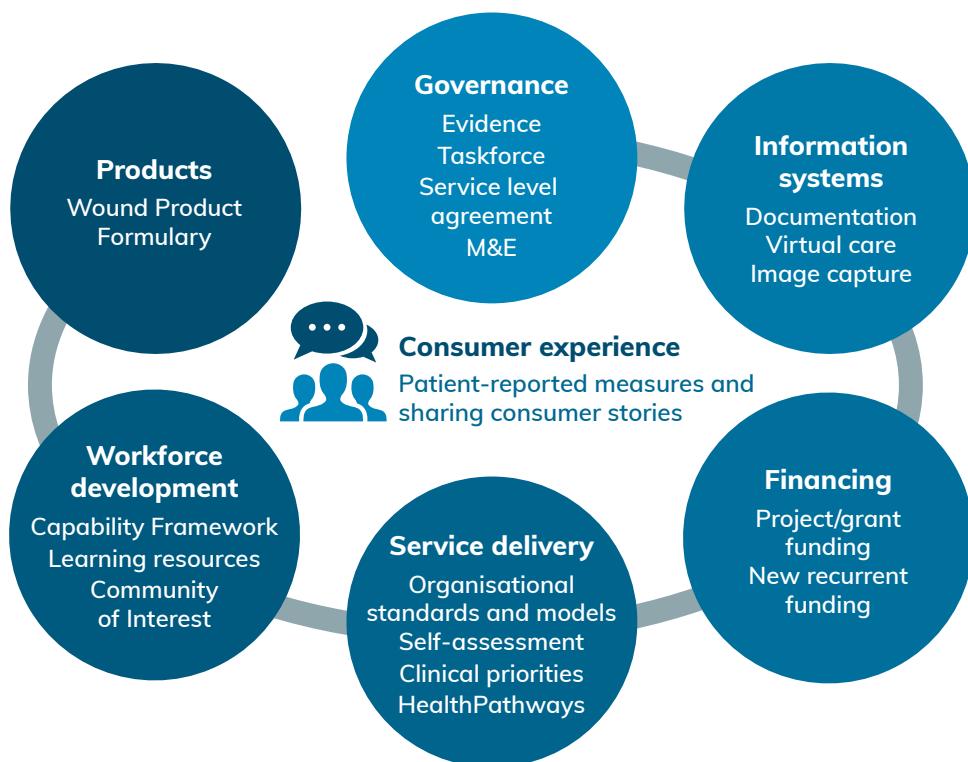
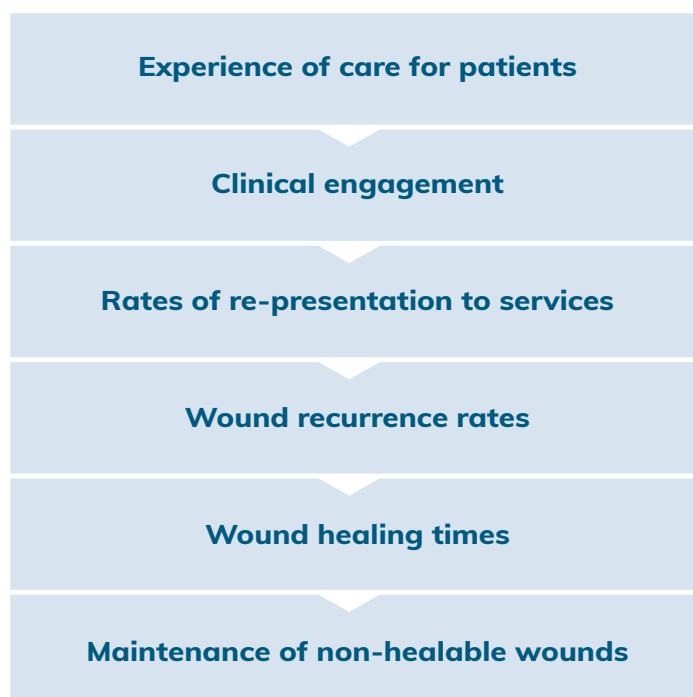


Diagram adapted from [Systems Thinking for Health Systems Strengthening](#) (WHO 2009, p32).

Areas for improvement



Key lessons for improving chronic wound management

- Collaboration between clinicians across health settings is essential.
- Consumers and their carers must be involved in decisions about their care.
- Health organisations need to invest in their systems and workforce to meet the [NSW LBVC Standards for Wound Management](#).
- Timely assessment, diagnosis, referral and escalation of care improves health outcomes.
- All health workers contribute to chronic wound prevention, early identification and management.
- Health workers need to understand and apply evidence-based practices, within their scope of practice.
- Chronic wounds impact all aspects of a person's life. The holistic needs of the person should be considered.

Key activities

Evidence-informed guidance

A [series of products](#) have been developed to guide the initiative and health services:

- NSW LBVC Standards for Wound Management
- Clinical priorities brief
- Organisational models
- Evidence summary.

Collaborative governance

The initiative is led by the ACI and in partnership with the Ministry of Health. It is governed by a Taskforce with representation from clinicians across NSW Health, primary care and non-government organisations, as well as consumers and carers.

Patient-reported measures: Wound Q

The Wound Q survey has been endorsed for use with consumers living with a chronic wound. It is being used by NSW health services to inform their care.

HealthPathways

Two HealthPathways have been developed to support primary care providers at the point of care, with the assessment and management of chronic wounds, and the use of wound products and equipment.

Organisational self-assessment

A self-assessment tool and resource kit is supporting LHDs to explore their current strengths and identify gaps against the Standards for Wound Management. This will inform development of local quality improvement plans.

Wound care formulary

The NSW Health Wound Care Formulary aims to promote quality use of wound care dressings and products; streamline wound product governance; and improve the effective use of products. The Formulary was developed by clinicians on the Taskforce through a systematic review of products on the statewide contract for dressings and consumables.

Capability framework

A Capability framework has been developed, to define the requirements for clinicians and the health system to ensure the delivery of effective chronic wound prevention and management.

Find out more: [LBVC Chronic Wound Management Initiative](#)

Contact: aci-chronicwounds@health.nsw.gov.au