

OCS

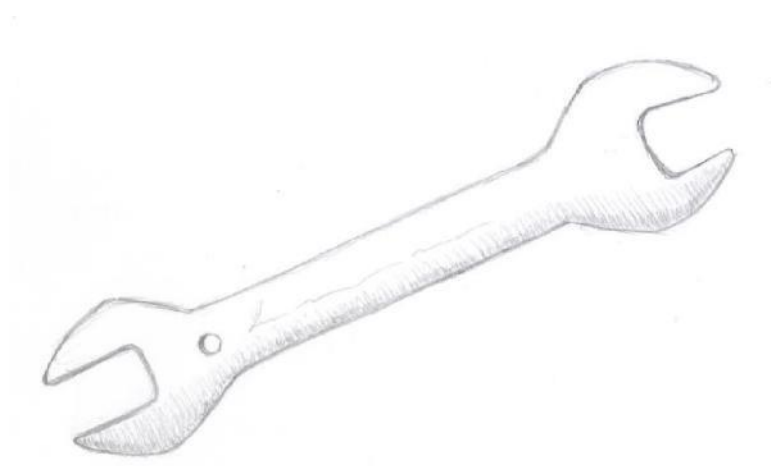
Oxford Cognitive Screen – Australian Version

Test Booklet

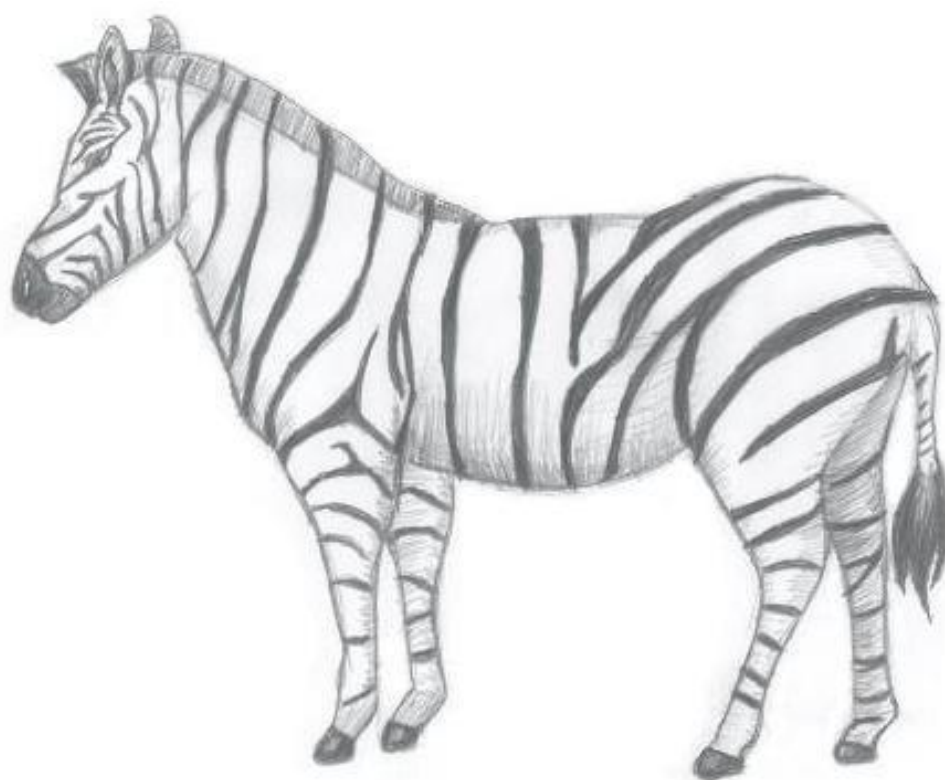
Version B

Year: _____

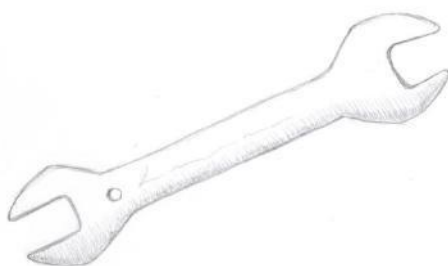
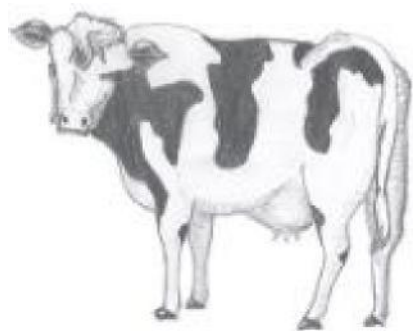
Site: _____











1) Which city or town are we in ?

[Correct city / town]

[Famous same size city / town]

[Nearby same size city / town]

[Famous nearby city]

2) What part of the day is it now?

Morning

Afternoon

Evening

Night

3) Can you tell me the month?

January

February

March

April

May

June

July

August

September

October

November

December

4) What is the year we are in now?

[199x]

(where 'x' is the last number of the current year,
for example; in 2014 'x' is 4, in 2015 'x' is 5)

[Current year + 1]

[Current year – 1]

[Current year]

**The chauffer drove
across the island to
see the choir, but
there was a queue.**

$$5 + 4 =$$

$$\underline{5 + 4 =}$$

8

9

10

14

$$16 + 8 =$$

$$\underline{16 + 8 =}$$

8

24

14

22

$$9 - 4 =$$

$$\underline{9 - 4 =}$$

2

5

6

13

$$35 - 18 =$$

$$\underline{35 - 18 =}$$

13

17

21

27

Which word was in the sentence?

driver

chauffeur

motorist

cabbie

Which word was in the sentence?

peninsula

atoll

island

reef

Which word was in the sentence?

chorus

singers

band

choir

Which word was in the sentence?

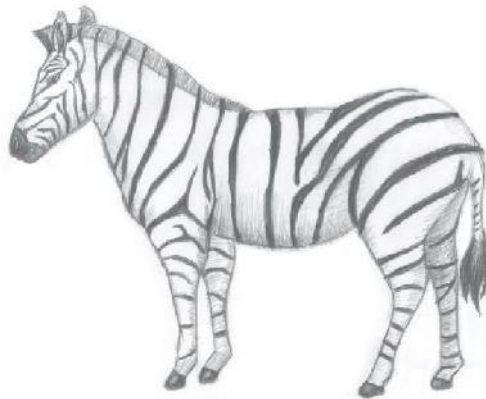
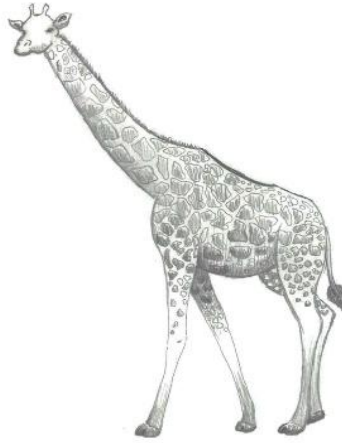
queue

line

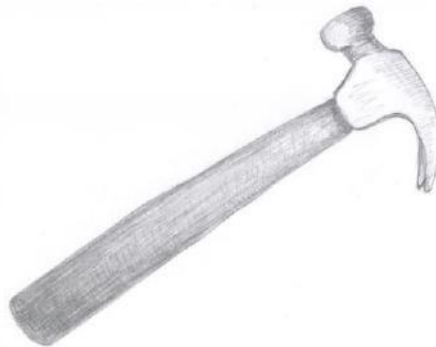
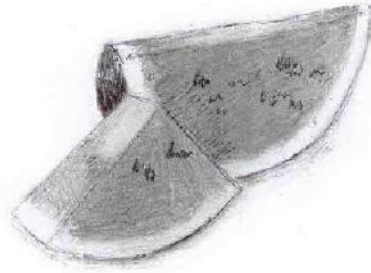
row

stream

Which picture did you see before?



Which picture did you see before?



What did you do before?
(demonstrate)

Clap your hands

Make these finger positions

Snap your fingers

Count my fingers

What did you do before?

Rhyming

Sums

Word writing

Multiplications

