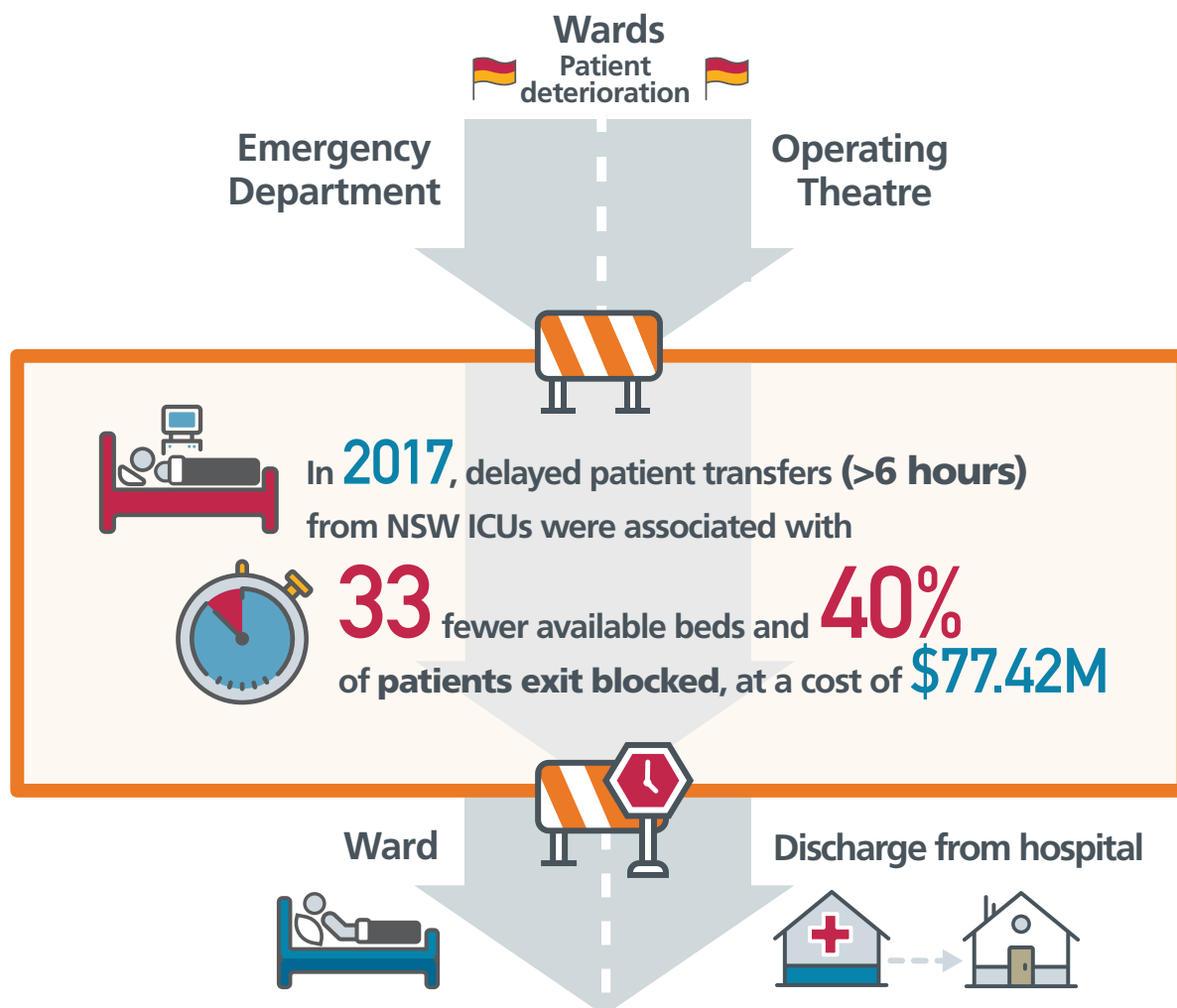


Addressing ICU Exit Block: Right care, right patient, right place

A whole of hospital approach to optimising intensive care capacity

Intensive care services are a precious resource that should be consistently, safely and efficiently provided in NSW. Intensive care unit (ICU) exit block is a significant problem impacting the care of critically ill patients by preventing them moving out from ICU in a timely manner. Delays in transfers prevent patients from accessing the next stage of their healthcare journey, impacting whole of hospital patient flow, and can also prevent new patients being able to access intensive care services.



Expected benefits

- ✓ Improved quality and safety of care delivered to the critically ill patient
- ✓ Better and safer care delivered to the critically ill patient in the right place at the right time
- ✓ The reduction of after-hours discharge from the ICU
- ✓ Improved patient, carer, family experience and journey
- ✓ Positive impact on other hospital patient flow performance indicators e.g. Emergency Treatment Performance (ETP)
- ✓ Improved staff experience
- ✓ Improved efficiency in use of intensive care resources across LHDs with significant cost savings to NSW Health.

Visit the ACI website for further information or email ACI-Intensive-Care-NSW@health.nsw.gov.au