

# Acute Care Taskforce – May 2013

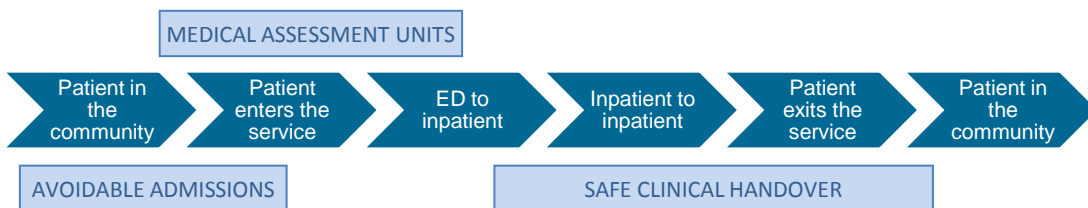
## Improving the medical patient journey

Co Chairs - Vicki Manning / Jeremy Wilson

### BACKGROUND

Since early 2005 the Acute Care Taskforce (ACT) has provided high level system-wide advice on the medical patient journey. The ACT has undertaken discrete projects on avoidable admissions and safe clinical handover and also led the establishment of 29 Medical Assessment Units (MAUs) across the state (Figure 1).

**Figure 1** ACT and the medical patient journey (2005-2012)



### 2012: REPOSITIONING THE ACT

Following a transition to the NSW Agency for Clinical Innovation (ACI) in 2012 the ACT repositioned to a state-wide Taskforce. The ACT has broad representation that includes clinicians and managers from all Local Health District and Specialty Networks (LHD/SNs), consumers, general practitioners, the Clinical Excellence Commission, Ambulance Service of NSW and other bodies that underpin NSW health care delivery.

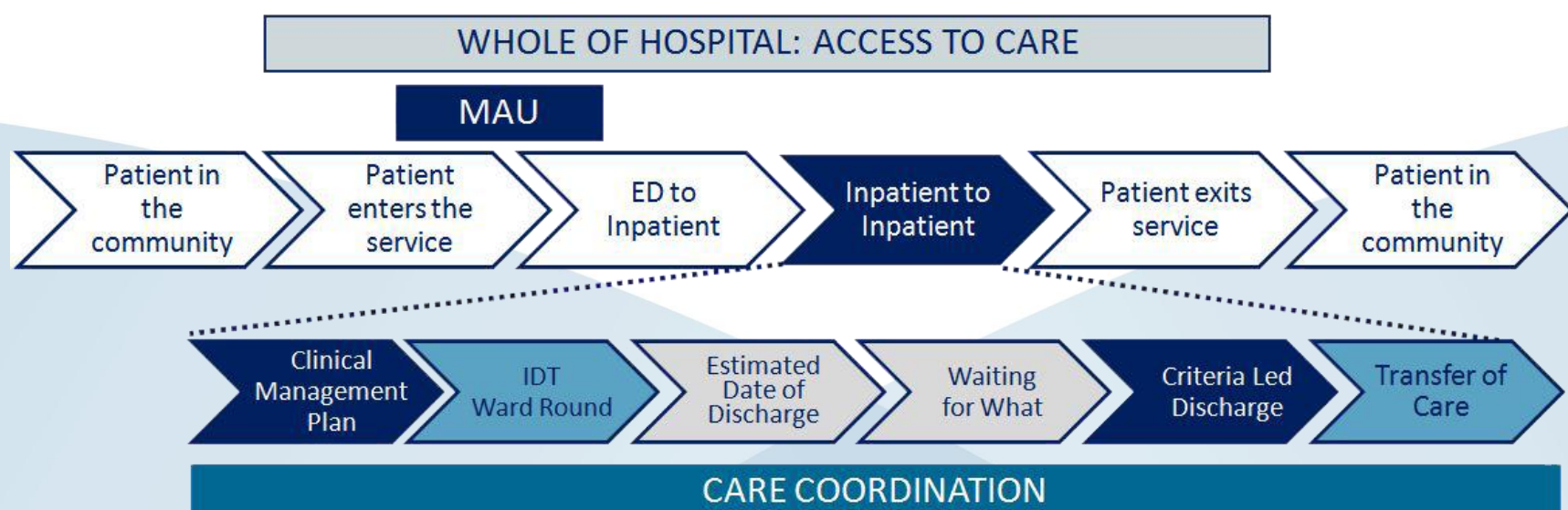
### 2012/3: SETTING THE WORK PLAN

Workshops in 2012/13 developed a workplan focused on improving the medical inpatient journey. The elements of the medical inpatient journey were confirmed as:

- a **clinical management plan** that is commenced on admission and revised during the inpatient journey.
- **interdisciplinary ward rounds** that involve all members of the health care team including patients and their families (e.g. *In Safe Hands* - Structured Interdisciplinary Ward Rounds - SIBR).
- a meaningful **estimated date of discharge** that is entered on admission, revised throughout the patient journey and includes what a patient is waiting for (e.g. *waiting for what?*).
- a structured process for identifying patients eligible for **criteria led discharge**
- planned **transfer of care** in partnership with the patient, their families and/or carers.

This project has strong links to ongoing work across the system (Figure 2).

**Figure 2** The Acute Care Taskforce: improving the medical inpatient journey (2013)



Leads: **ACI** **MOH** **LHDs** **CEC**

Educational materials on 'smooth patient flow' across the patient journey are being developed by: **HETI**

### CONTACT

Kate Lloyd  
Manager, Acute Care  
T: 02 9464 4623 M: 0467 603 578  
E: [kate.lloyd@aci.health.nsw.gov.au](mailto:kate.lloyd@aci.health.nsw.gov.au)



## PROGRAM OF WORK

ACI has established three working groups (WGs) to develop key pieces of work under the direction of the ACT.

### MEDICAL ASSESSMENT UNITS (MAUs)

The NSW Health MAU Evaluation will be published imminently. It recommends that:

*ACI will undertake a broader consultation of the Medical Assessment Unit Model of Care 2012 to ensure the components are achievable across existing and future MAUs.*

At the initial meeting the WG agreed that the principles of the draft model are sound. The WG will now focus on developing tools to support the model with a focus on direct admission processes working closely with primary care and NSW Ambulance Service. The next MAU Model of Care Working Group will take place on Friday May 31 between 10:00 and 12:00.

### CRITERIA LED DISCHARGE (CLD)

The CLD WG has developed a draft CLD form, a framework for CLD and a resource to support the introduction of CLD. This work is Co Chaired by Liza Edwards, Principal Advisor - Nursing Practice, Nursing & Midwifery Office, Ministry of Health. The ACT is currently seeking a medical lead to support the development of CLD.

### CLINICAL MANAGEMENT PLANS (CMP)

The CMP WG has agreed on a set of guiding principles to improve the sharing of information between health professionals throughout the inpatient journey. This work is Chaired by Tracy Brown, Geriatrician, Hunter New England LHD.

The CLD WG and CMP WG will both present their work for the consideration of the ACT at the next meeting on Friday June 14.

## ACUTE CARE TASKFORCE: MEMBERSHIP

- Central Coast LHD
- Children's and Paediatric Services Network
- Hunter New England LHD
- Illawarra Shoalhaven
- Mid North Coast LHD
- Murrumbidgee LHD
- Nepean Blue Mountains LHD
- Northern NSW LHD
- Northern Sydney LHD
- South Eastern Sydney LHD
- South Western Sydney LHD
- Southern NSW LHD
- St Vincent's Health Network
- Sydney LHD
- Western NSW LHD
- Western Sydney LHD
- Agency for Clinical Innovation
- Ambulance Service of NSW
- An academic
- Clinical Excellent Commission (CEC)
- Consumers
- Health Education & Training Institute (HETI)
- Junior Medical Officers (HETI)
- NSW Ministry of Health (MOH)
- Primary Health Care, including Medicare Locals

In 2013 the state-wide ACT will meet quarterly on the second Friday of the month. The remaining meetings for 2013 are June 14, September 13 and December 13. An Executive will provide strategic guidance to the ACT, meeting monthly on the second Friday (except Mar, Jun, Sep and Dec).

## CONTACT

Kate Lloyd  
Manager, Acute Care  
T: 02 9464 4623 M: 0467 603 578  
E: [kate.lloyd@aci.health.nsw.gov.au](mailto:kate.lloyd@aci.health.nsw.gov.au)