

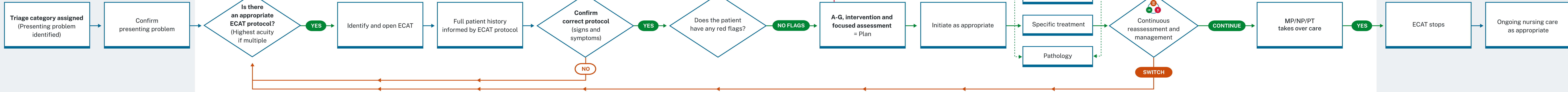
Triage and assessment

ECAT initiated

ECAT stops

Progress

ECAT workflow and key decision points



Identify and open ECAT

- Review triage notes, check in with patient to confirm brief history and symptoms.
- The appropriate ECAT protocol is identified.

Initiate care

- ECAT is initiated - Full history, A-G, focused assessment and interventions used to create plan for patient and provide care.
- Imaging, pathology and medication begin as needed within nurses scope of practice.

Reassess

- Continuous reassessment and management.
- Nurse decides to continue or switch ECAT protocols. Escalate according to the local CERS protocol if required.

Progress

- Medical Practitioner, Nurse Practitioner or Physiotherapist is assigned care of patient, in person or virtual.
- ECAT protocol stops.