

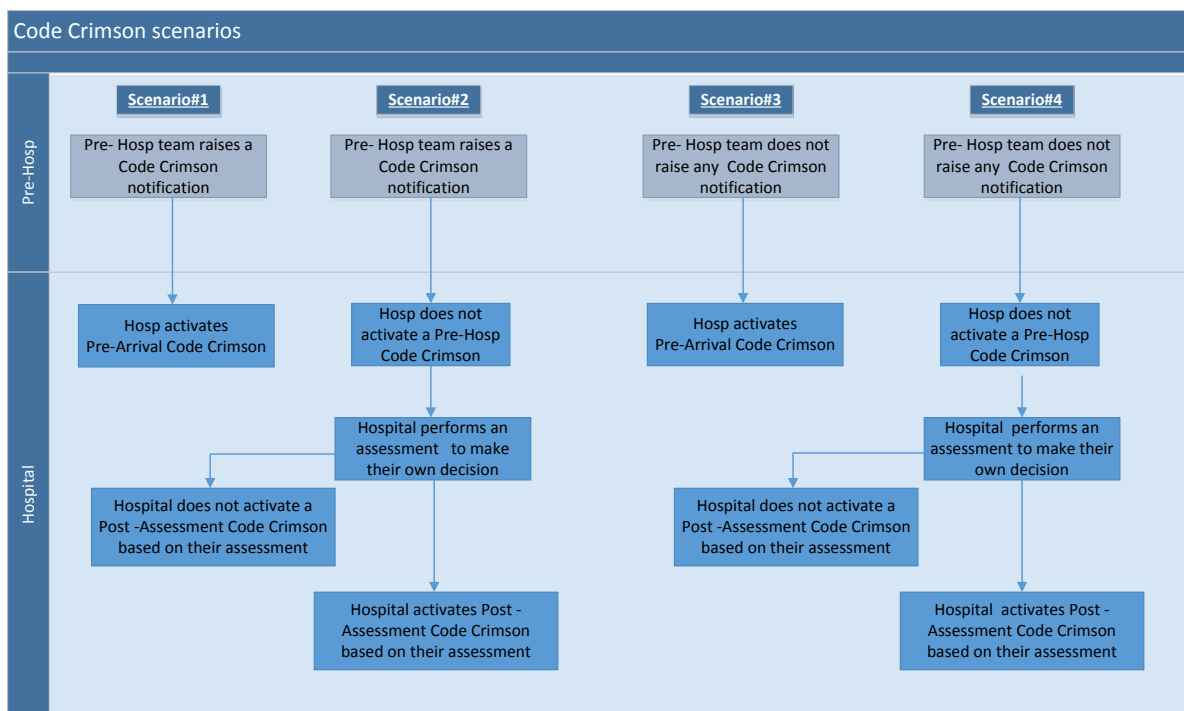
# Trauma Centre Data Collection: Trauma ‘Code Crimson’ Pathway

ITIM will collate data from the Aeromedical and Medical Retrieval Services and from the trauma services on ‘Code Crimson’ activations to evaluate the effectiveness of the pathway. To enable this, ITIM requests that trauma services complete a new section in the Custom Field of the ED tab in Collector. Completing these options is only indicated when a trauma service has implemented the Trauma ‘Code Crimson’ Pathway, and where a trauma ‘Code Crimson’ activation has occurred, either by the pre-hospital or hospital team.

The three new options in the Custom Field section of the ED tab are (select up to two):

- Pre-hospital Code Crimson notification received
- Hospital activated Code Crimson pre-arrival
- Hospital activated Code Crimson post-assessment

By selecting one or two of these options, the following scenarios can be determined:



## CONTACT DETAILS

For further information please contact:  
*NSW Institute of Trauma and Injury Management  
 Level 4, 67 Albert Avenue Chatswood, 2067  
 kelly.dee@health.nsw.gov.au*