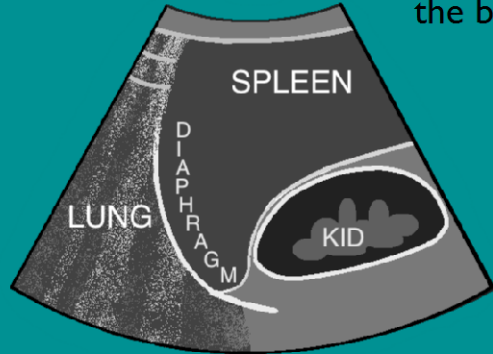
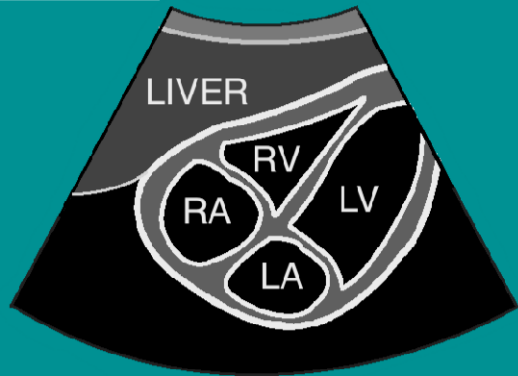


(4) LUQ Depth 15cm.

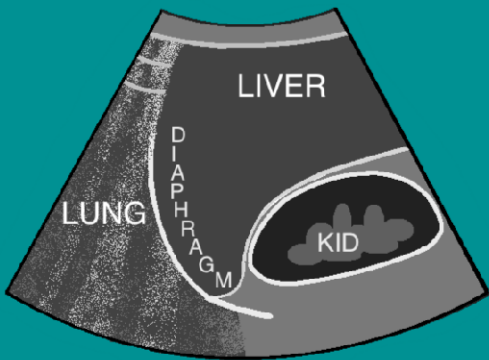
*Knuckles on the bed



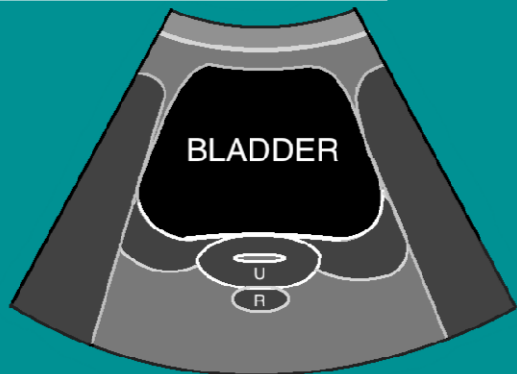
(5) Subcostal Depth 25cm.



(1) RUQ Depth 15cm.



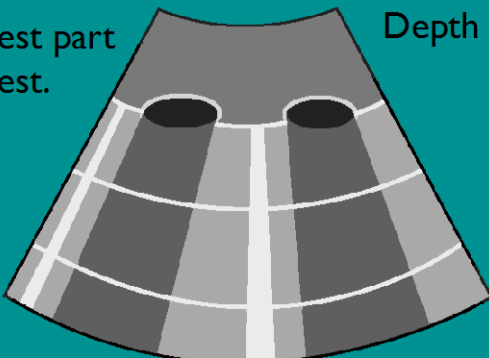
(6) Suprapubic- transverse Depth 20cm.



(2), (3) R & L Anterior Chest

*Highest part of chest.

Depth 5cm.



(6) Suprapubic- longitudinal

Depth 20cm.

