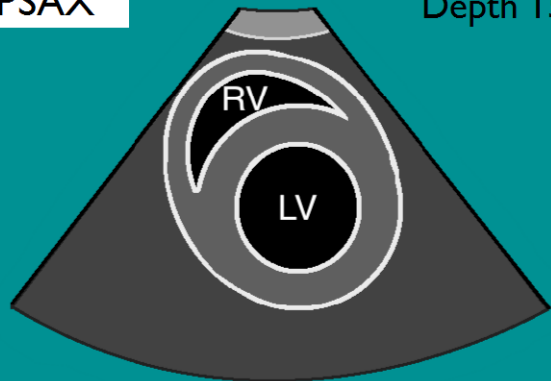


(1), (2) 2nd IC space, left sternal edge  
 (3) Over apex beat  
 (4), (5) Subxiphoid

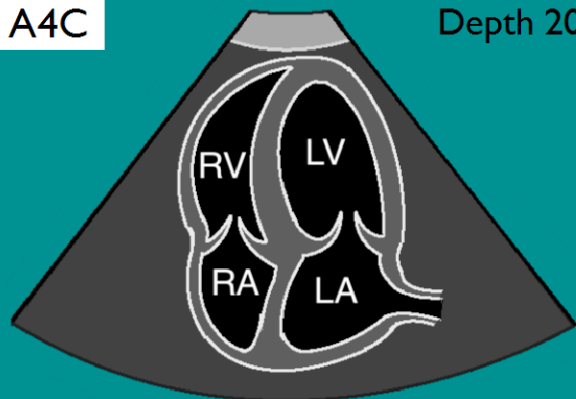
(3) PSAX

Depth 15cm.



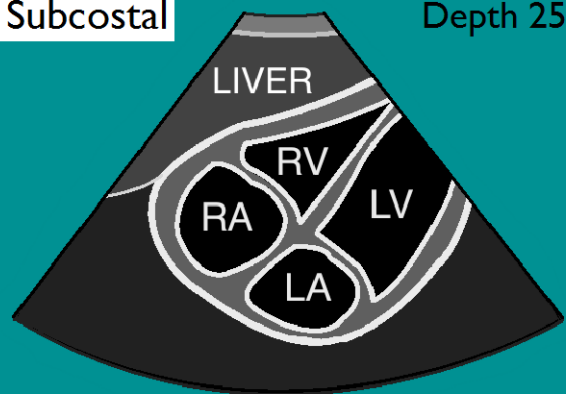
(3) A4C

Depth 20cm.



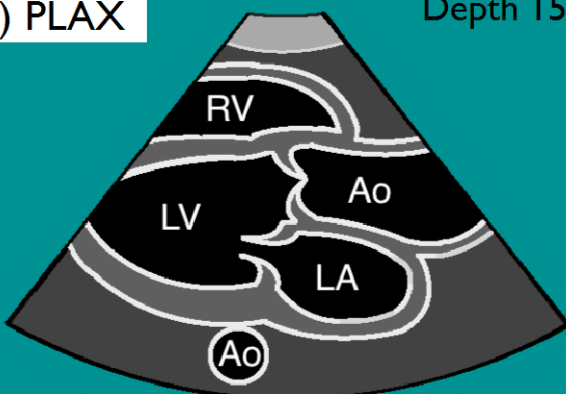
(4) Subcostal

Depth 25cm.



(1) PLAX

Depth 15cm.



(5) IVC

Depth 20cm.

