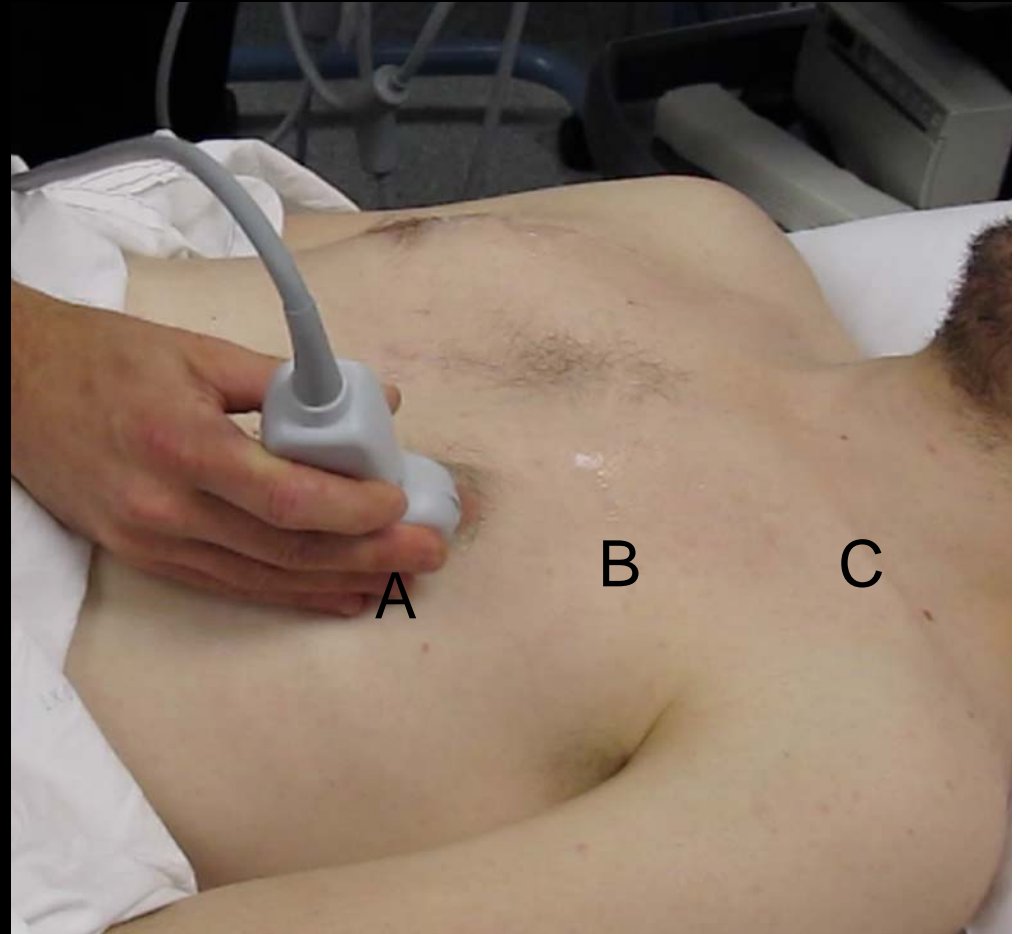


JB Critical Care Ultrasound Course MCQ

Choose the ONE best answer for each question

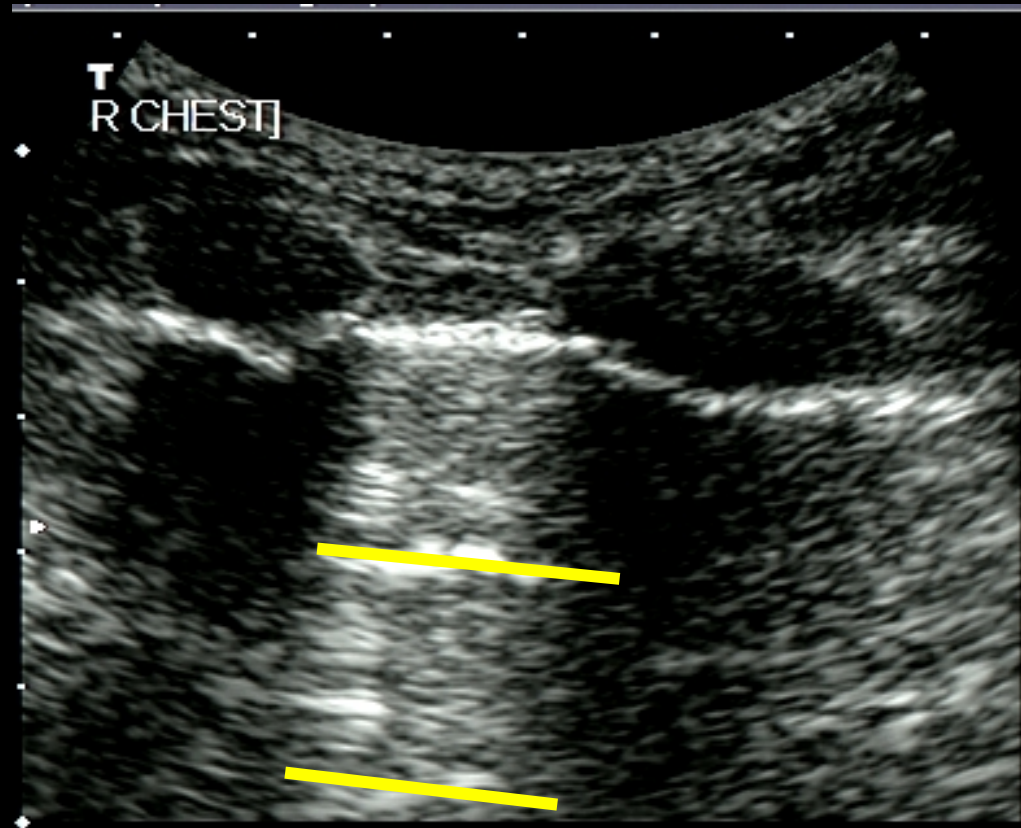
1. To find a small pneumothorax when supine, place the probe at:

- a) A
- b) B
- c) C
- d) Anywhere on the chest is fine



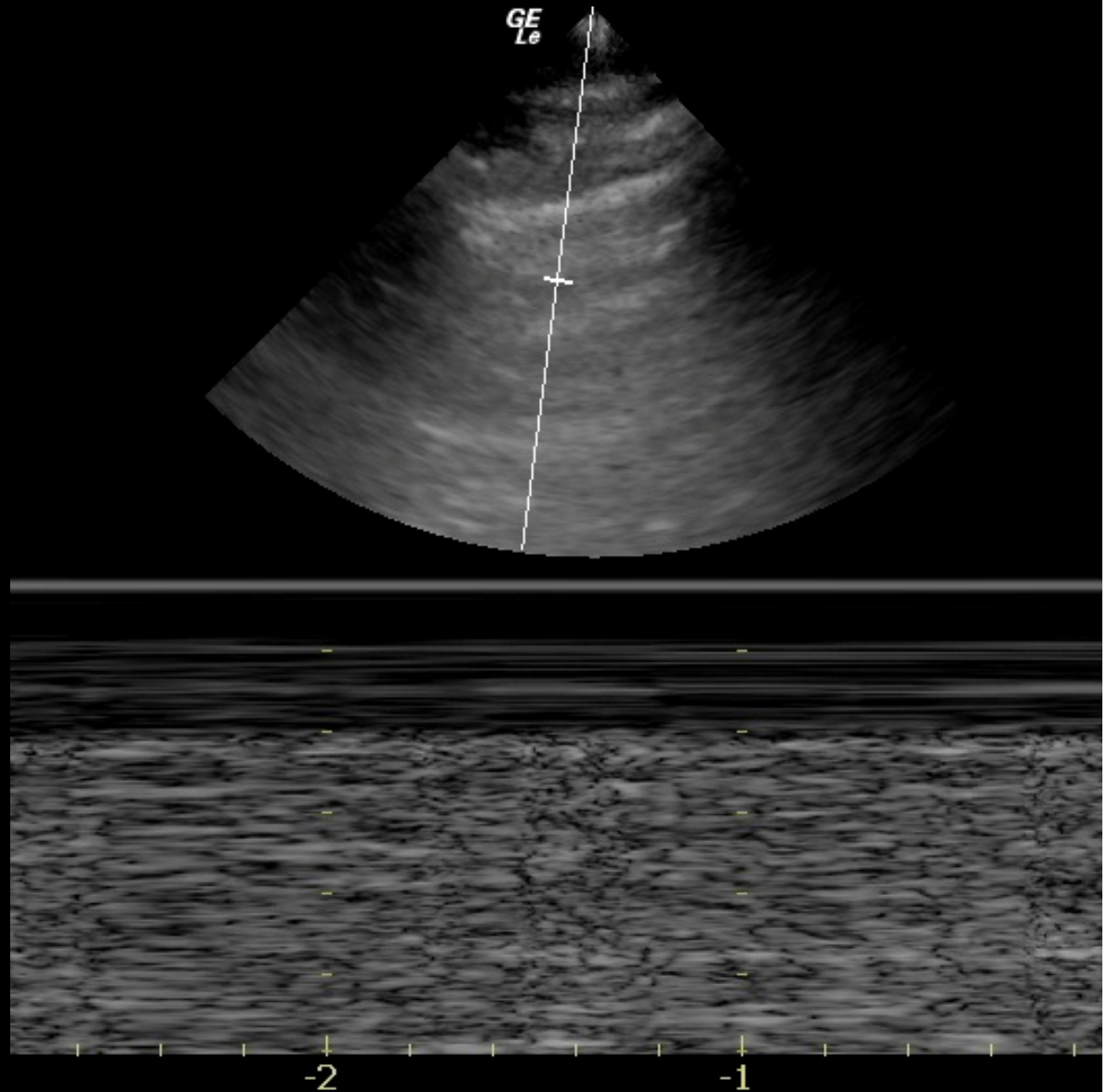
2. The indicated artifacts (A lines) may be found in:

- a) Normal lung
- b) Pneumothorax
- c) Both
- d) Neither



3. This M-mode lung image demonstrates:

- a) Seashore sign
- b) Stratosphere sign
- c) Lung point sign



4. This ultrasound image is consistent with:

- a) Pneumonia
- b) Malignancy
- a) Contusion
- b) All of the above



5. This M-mode lung image demonstrates:

- a) Seashore sign
- b) Stratosphere sign
- c) Lung point sign



6. This shocked patient is most likely:

- a) “Empty”
- b) Euvolaemic
- c) ‘Full’



7. This shocked patient is most likely:

- a) 'Empty'
- b) Euvolaemic
- c) 'Full'

