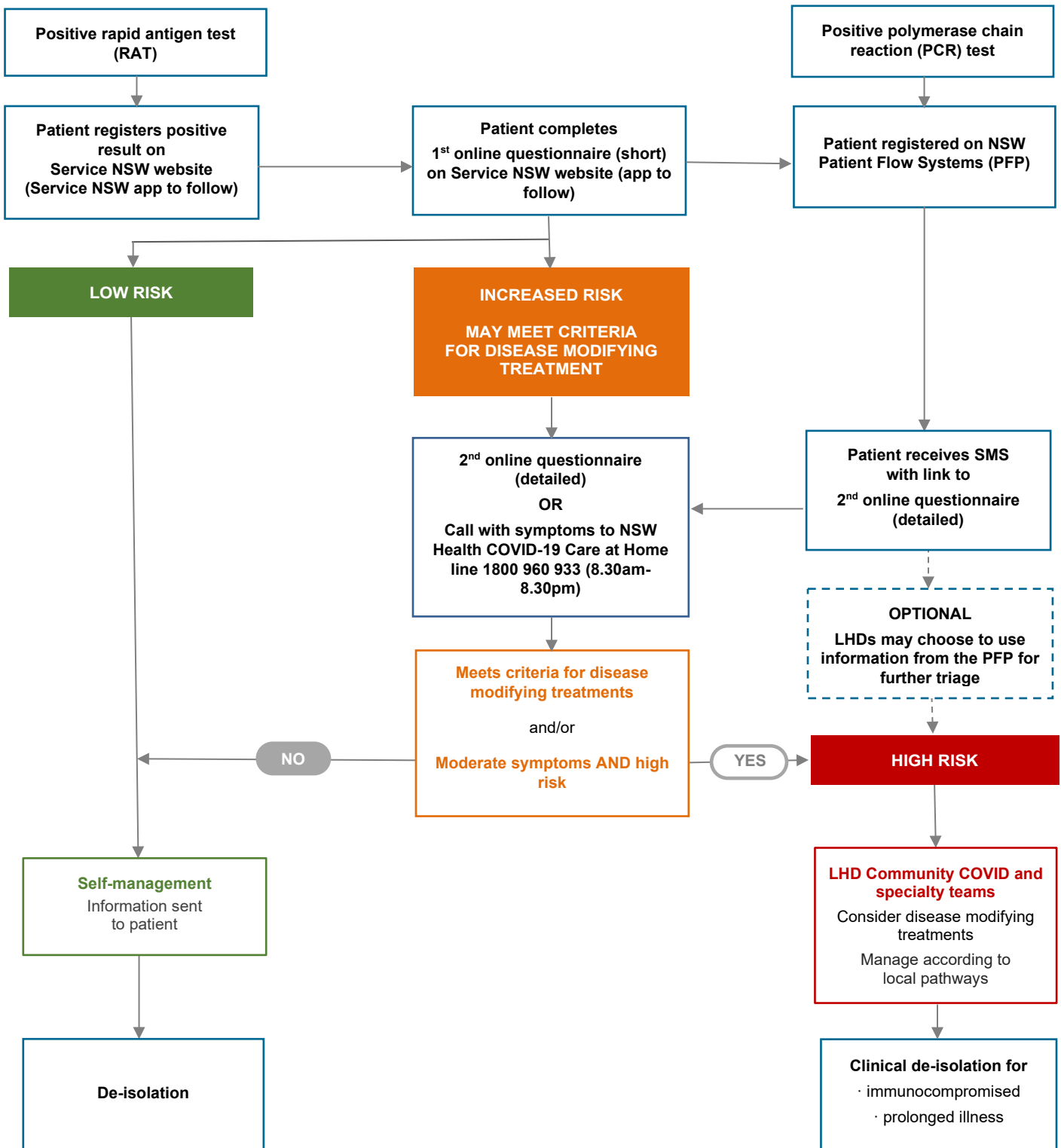


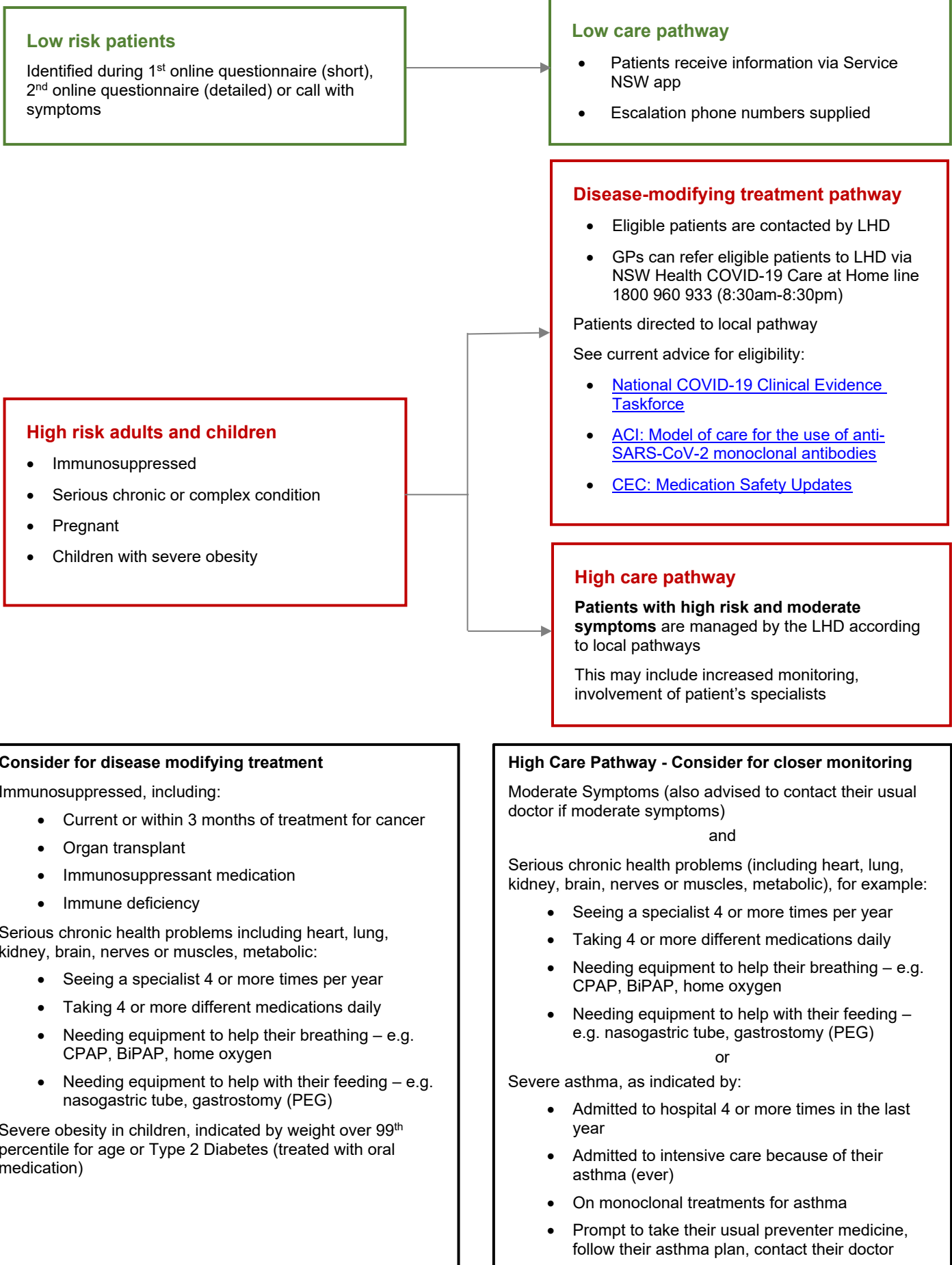
Caring for adults and children in the community with COVID-19

(RAT and PCR positive)

Flow chart and care protocols as at January 12, 2022



COVID-19 care in the community: Care protocols for adults and children



| Document information | |
|---------------------------|---|
| Version number | 1 |
| Original publication date | 12 January 2022 |
| Supersedes | Caring for adults in the community with COVID-19 – Flow chart and care protocols Caring for children in the community with COVID-19 – Flowchart and care protocols |
| Developed by | NSW Agency for Clinical Innovation |
| Consultation | COVID Care in the Community Subject Matter Expert Reference Group |
| Endorsed by | Dr Nigel Lyons |
| Review date | |
| Reviewed by | |
| For use by | NSW Health local health districts, specialty health networks and primary health care |



© State of New South Wales (Agency for Clinical Innovation).

[Creative Commons Attribution NoDerivatives 4.0 licence](https://creativecommons.org/licenses/by-nd/4.0/).

For current information go to: aci.health.nsw.gov.au

The ACI logo is excluded from the Creative Commons licence and may only be used with express permission.

ACI-4863 [01/22] SHPN (ACI) 211152

