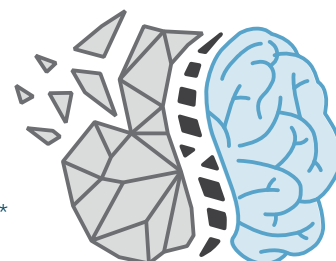


Introducing the Be Pain Smart Clinic

The Agency for Clinical Innovation has developed an integrated chronic pain consultative clinic for people with a spinal cord injury or moderate to severe brain injury and chronic pain – the Be Pain Smart Clinic.*



The Be Pain Smart Clinic will provide:

- A multi-disciplinary pain clinic, staffed by clinicians (doctors, physiotherapist and psychologist) with a specialised background in pain management working together with brain injury or spinal cord injury specialist teams
- A multi-disciplinary pain assessment and management plans for people with chronic pain following a spinal cord injury and/or a moderate to severe traumatic brain injury.
- Consultation and liaison with local GPs, allied health providers and case managers
- The clinic will rotate locations (1 day/week) across the adult Sydney metropolitan and regional TBI and SCI units and provide tele-health combined with site visits to those in rural NSW
- The pain team will provide ad-hoc mentoring and support to NSW clinicians as required.

The children's service is located at:

Children's Hospital Westmead

Corner Hawkesbury Road and
Hainsworth Street, Westmead

The adult service is located at:

Royal Rehab

235 Morrison Road Ryde

The service is available for:

Public, NDIS, compensable and
Lifetime Care and Support people
across NSW who have pain and a
spinal cord injury or brain injury.

Telehealth consultations are available for:

Rural and remote people or
upon request.

For more information about the Be Pain Smart Clinic contact:

Regina Schultz, Clinic Manager – call 0409 716 387

or email regina.schultz@health.nsw.gov.au

* This project is funded by icare