

**SEEKING HELP COULD  
SAVE YOUR LIFE**



**Health**  
Western NSW  
Local Health District

**DEVELOPED BY THE WESTERN NSW LOCAL HEALTH  
DISTRICT PARVAN TEAM 2019**



**THINGS YOU CAN'T SEE**

## SEEK MEDICAL ADVICE IF YOU EXPERIENCE ANY OF THESE

**BREATHING** - Difficulty breathing, hyperventilation, unable to breathe.

**SWALLOWING** - Trouble swallowing, painful swallowing, neck pain, nausea/vomiting, drooling.

**VOICE** - Raspy &/or hoarse, coughing, unable to speak, complete loss of voice.

**PHYSICAL** - unconsciousness, dizziness, headaches, involuntary urination or defecation, loss of strength, going limp, seizures or fitting of any kind.

**VISION** - Complete loss of sight or black & white vision, seeing stars, blurry vision, darkness, unusual feeling around eyes.

**HEARING** - Complete loss, gurgling sounds, ringing, buzzing, popping pressure, tunnel like hearing.

**BEHAVIOURAL** - Memory loss, restlessness, problems concentrating, amnesia, agitation, hallucinations, changes in mood.

**SYMPTOMS TO LOOK OUT FOR DAYS, WEEKS AND MONTHS AFTER ANY PRESSURE TO YOUR NECK**

## VISIBLE SIGNS



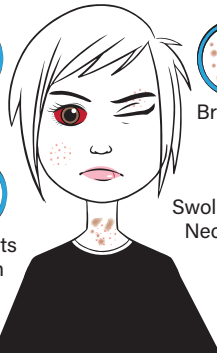
Blood red eye



Bruising



Red spots on skin



Swollen Neck