



AGENCY FOR  
**CLINICAL  
INNOVATION**

# Rehabilitation Network

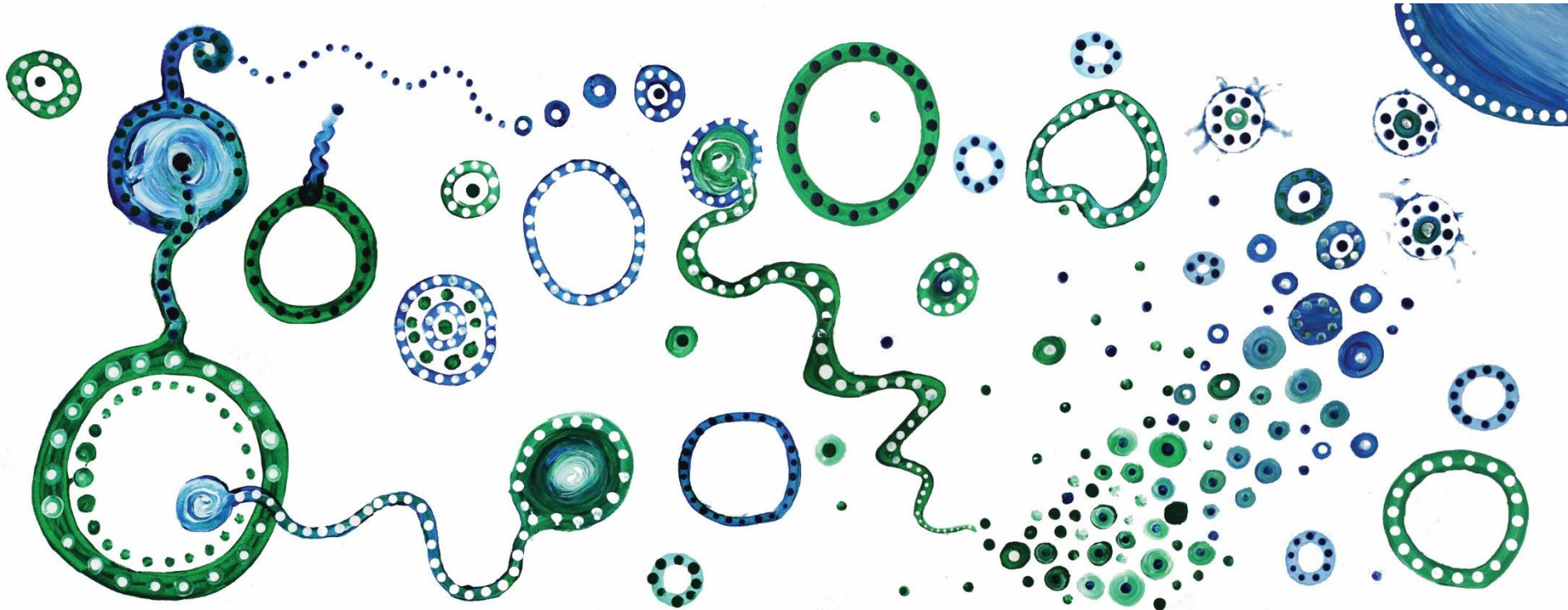
## Update

The last 12 months...

**Justine Watkins**

**A/Network Manager**

The ACI acknowledges the traditional owners of the land that we work on  
– the Cammeraygal People of the Eora Nation. We pay our respects to Elders past  
and present and extend that respect to other Aboriginal people present here today.



- **Network Members:** membership list was revisited late last year with an update list established by November
  - November 2018 = **468**
  - July 2019 = **659**
- **Bulletins:**
  - Fortnightly newsletter
  - **21** newsletter produced so far
  - Includes: calls to join Executive/Working Parties, surveys, job opportunities, call for help/information, upcoming events/save the date, reports on workshops/events, new resources, research, award/grant promotion, Network updates, release of reports, updates from key organisations etc



- **Key groups:**
  - **Executive** = 16 members; Medical Co-Chair & Nursing Co-Chair; medical, nursing & allied health
  - **Education & Professional Development Working Party** = 13 members; nursing & allied health
  - **Data Outcomes & Measurement Working Party** = 13 members; medical, nursing & allied health – recruiting to vacant positions
  - **Amputee Working Group** = 10 members; medical, allied health & other



# Key products

- Principles to Support Rehabilitation Care
- Rehabilitation consumer brochure
- Rehabilitation services scoping project
- Consumer Engagement guide



- **Stroke Rehabilitation**

- Workshop: December 2018
- 18 of the 40 NSW rehabilitation services who participated in the National Stroke Audit attended
- Focus areas:
  - 1) Mood screening / assessment,
  - 2) Information provided whilst in hospital,
  - 3) Education regarding risk factors / lifestyle modification prior to discharge

National Stroke Audit

Rehabilitation Services  
Report 2018

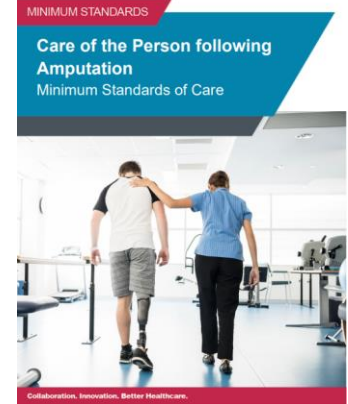
[strokefoundation.org.au](http://strokefoundation.org.au)

- **Unwarranted Clinical Variation**

- Workshop: February 2019
- 42 attendees: from most LHDs, NSW Health and Stroke Foundation
- Focus on 3 areas: stroke, hip fracture, reconditioning
- Issues identified:
  - 1) timeliness of referral from acute care to inpatient rehabilitation,
  - 2) delays impacting admission to inpatient rehabilitation (once accepted),
  - 3) Length of inpatient rehabilitation admission
  - 4) Delays impacting discharge to community from inpatient rehabilitation

- **Amputee Minimum Standards of Care**

- Workshop: March 2019
- 80 attendees
- Focus:
  - 1) Recap of the Standards
  - 2) Examine the state-wide self-assessment results
  - 3) Understand the barriers and enablers that services around NSW have experienced with implementation of the Standards
  - 4) Learn from other NSW services
  - 5) Understand the complex landscape for ongoing care needs and plan the next steps

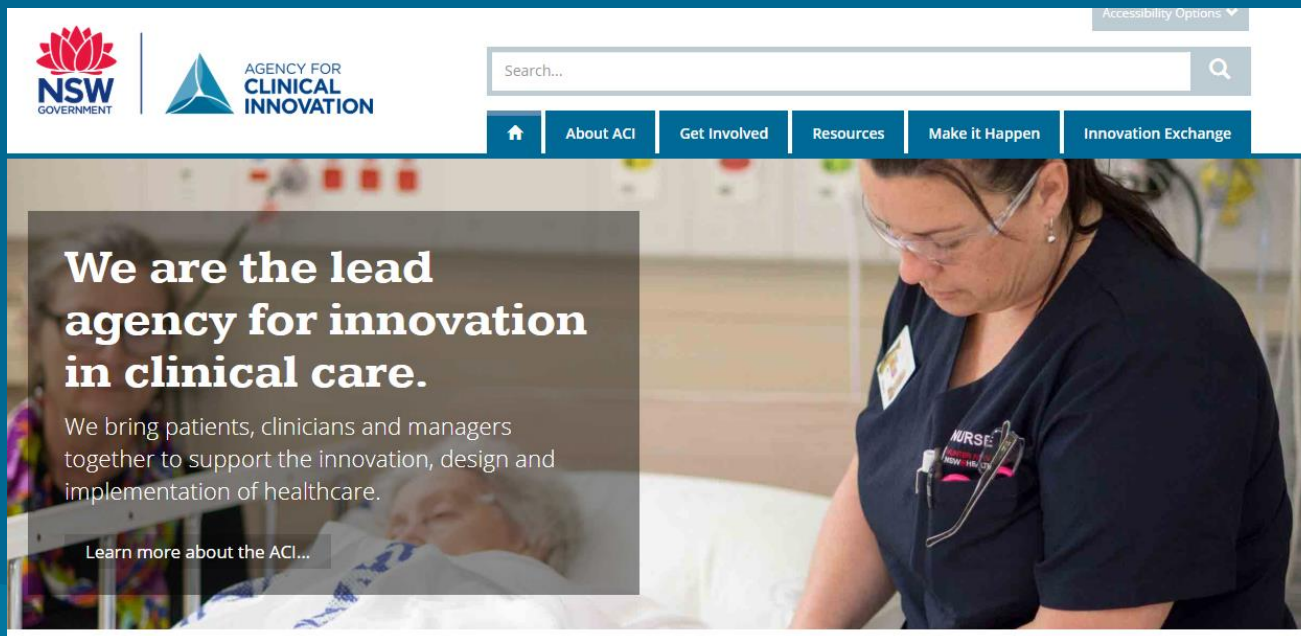




- **Knowledge sharing**
  - Monthly webinar schedule
  - Annual Education Forum
- **Partnerships**
  - Ministry of Health – Activity Based Management Team
  - AROC – Membership Advisory Group
  - Integrated Care Committee, War Memorial Hospital
  - Stroke Foundation
- **Rehabilitation Service reviews** - consultant
- **Linkages**
  - NDIS
  - LBVC

- **Translational Research Grant Scheme**
  - ACTIVE-ARM
- **ACI Research Grant Scheme 2018**
  - i-SCAMP
  - Technology assisted Allied Health Assistant home visits
  - Sexual rehabilitation after stroke in metro & rural NSW
  - Pro-Active Rehabilitation Screening (PARS)
- **ACI Research Grant Scheme 2019**
  - 14 applications received
  - 3 priority projects; 7 projects supported

# Want more?



The screenshot shows the top section of the Agency for Clinical Innovation website. On the left, there are the NSW Government logo (a red lotus flower) and the Agency for Clinical Innovation logo (a blue triangle). To the right is a search bar with the text "Search..." and a magnifying glass icon. Below the search bar is a navigation menu with five items: a home icon, "About ACI", "Get Involved", "Resources", "Make it Happen", and "Innovation Exchange". The main content area features a large image of a nurse in a hospital setting. Overlaid on the left side of this image is a text box with the following content:

**We are the lead agency for innovation in clinical care.**

We bring patients, clinicians and managers together to support the innovation, design and implementation of healthcare.

[Learn more about the ACI...](#)



[aci.health.nsw.gov.au](http://aci.health.nsw.gov.au)