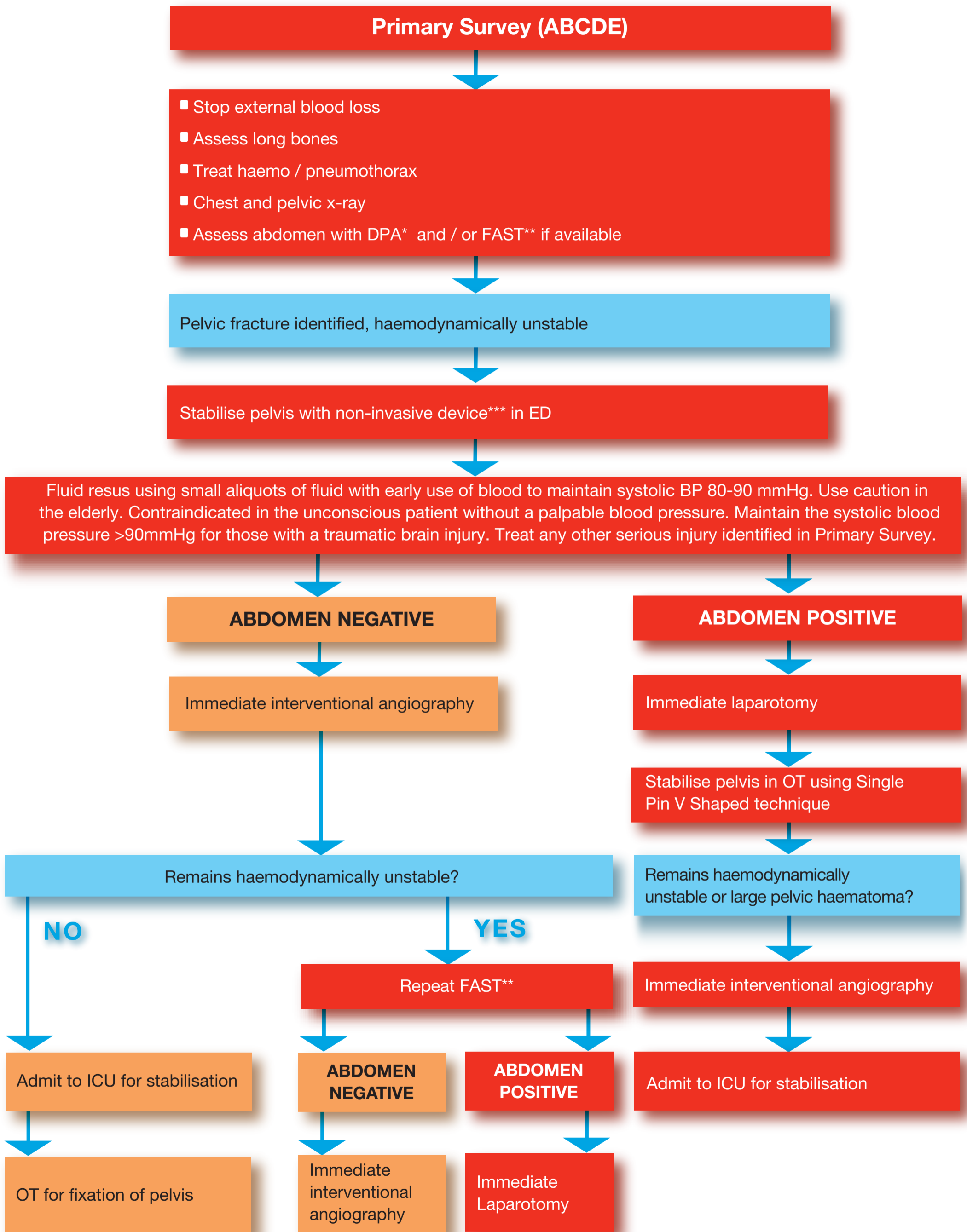


# Management of the Haemodynamically Unstable Patient with a Pelvic Fracture **with** Angiography Services available



\* Diagnostic Peritoneal Aspiration (DPA) ≥10mls of frank blood = Positive DPA  
 \*\* Focused Abdominal Sonography in Trauma (FAST). Free fluid = Positive FAST.  
 \*\*\*Non-invasive pelvic stabilisation with sheet or binder.