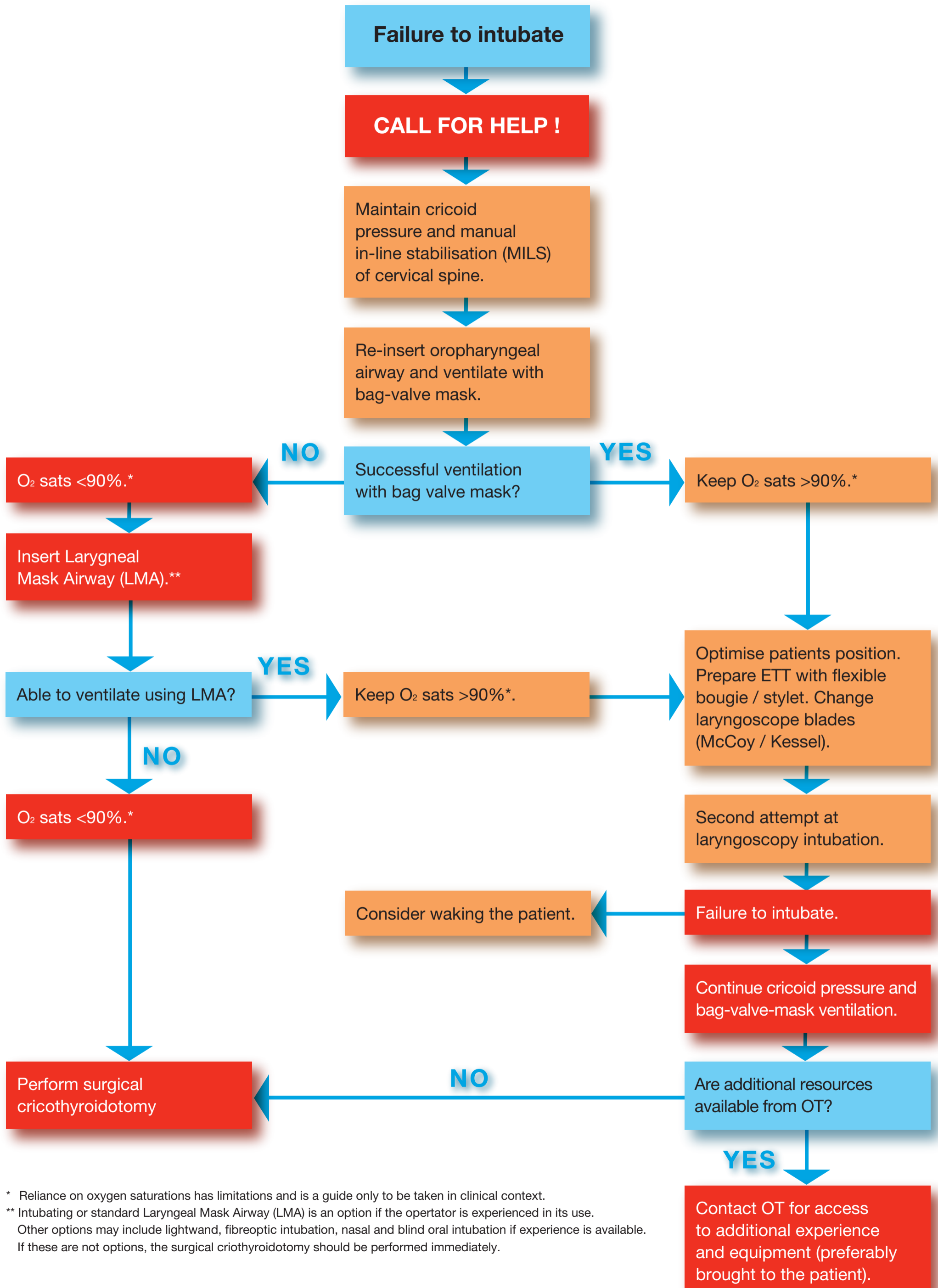


Difficult Airway Management



* Reliance on oxygen saturations has limitations and is a guide only to be taken in clinical context.

** Intubating or standard Laryngeal Mask Airway (LMA) is an option if the operator is experienced in its use. Other options may include lightwand, fiberoptic intubation, nasal and blind oral intubation if experience is available. If these are not options, the surgical cricothyroidotomy should be performed immediately.